

CAN Driver for LabVIEW

Driver Software for LabVIEW®

What is CAN driver for LabVIEW?

LabVIEW is a commercial software package for use on standard desktop PCs and laptops. It can be used wherever measurement and analysis data accumulates.

The CAN driver for LabVIEW allows you to send and receive CAN signals with LabVIEW that are defined in a CAN database (dbc format) directly from the LabVIEW application.

The following CAN hardware interfaces are supported:

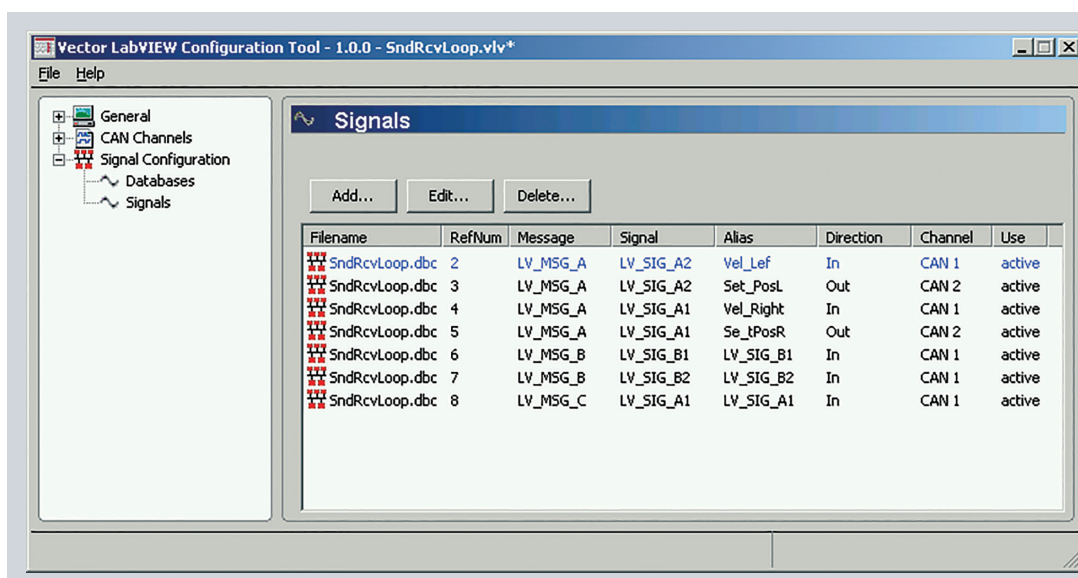
- > VN1600 family
- > CANcardXL
- > CANcardXLe
- > CANcaseXL log
- > CANboardXL
- > CANboardXL PCIe
- > CANboardXL pxi
- > VN7600

Features and Advantages

The CAN driver for LabVIEW accesses the CAN signals exclusively via symbolic names. The CAN raw data is converted automatically into physical values using conversion rules from the CAN database. If the CAN bus configuration is changed (for example bit position, conversion rule) all that is required is to edit the database. The references in the LabVIEW measurement structure can be updated automatically.

Functions

The CAN driver for LabVIEW supports the simultaneous use of up to eight CAN channels. Other Vector CAN tools and applications that have been created with the Vector XL-Driver-Library can be used at the same time and on the same channels.



CAN Driver for LabVIEW: access to CAN signals via symbolic names

Application Areas

The CAN driver for LabVIEW can be used in all phases of the development and production of vehicles, where a signal oriented analysis and evaluation of CAN messages with LabVIEW in combination with Vector hardware is required.

Requirements

- > LabVIEW version 7.0 or later
- > Vector CAN hardware interface
- > Vector driver for CAN hardware version 5.2 or higher

Included with Delivery

- > DLL driver for LabVIEW
- > Configuration tool
- > Manual (PDF file)

LabVIEW is a measurement system by National Instruments.