

# CAN-Driver for DIAdem

## Driver Software for DIAdem

### What is the CAN-Driver for DIAdem?

DIAdem is a commercial software package for use on standard desktop PCs and laptops. It can be used wherever measurement and analysis data accumulates.

The CAN-Driver particularly for DIAdem allows you to record CAN signals with DIAdem that are defined in a Vector CAN database (CANdb++).

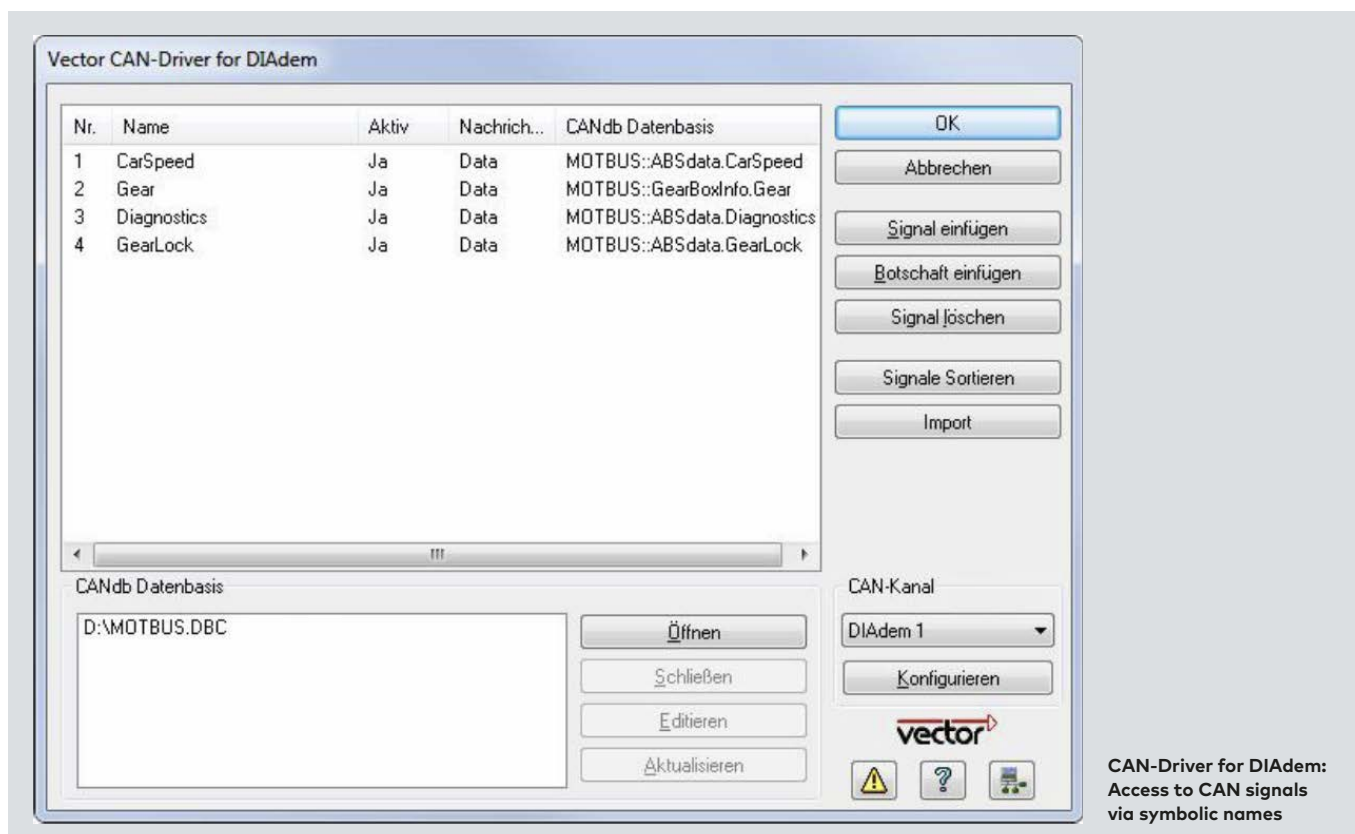
The following CAN hardware interfaces are supported:

- > CANcardXL/CANcardXLLe (PCMCIA, ExpressCard)
- > CANcaseXL/CANcaseXL log (USB)
- > CANboardXL Interface family (PCI, PCIe, pxi)
- > VN1600 Interface family (USB)
- > VN5610A and VN5640 (USB)
- > VN7570 and VN7572 (PCIe)
- > VN7600 and VN7610 (USB)
- > VN8900 Interface family (USB/Ethernet)

### Features and Advantages

The CAN-Driver for DIAdem accesses the CAN signals exclusively via symbolic names. The CAN raw data is converted automatically into physical values using conversion rules from the database (CANdb++). If the CAN bus configuration is changed (for example bit position, conversion rule) all that is required is to edit the database. The references in the DIAdem measurement structure can be updated automatically.

The CAN-Driver for DIAdem supports also the J1939 protocol (mixed mode J1939 and extended CAN IDs) as well as NMEA2000 and ISOBUS (ISO11783).



CAN-Driver for DIAdem:  
Access to CAN signals  
via symbolic names

**Functions**

The CAN-Driver for DIAdem supports the simultaneous use of up to 30 CAN channels. Other Vector CAN tools and applications that have been created with the Vector XL-Driver-Library can be used at the same time and on the same channels.

In addition, virtual CAN channels are available for tests without hardware. Send messages can also be measured.

**Application Areas**

The CAN-Driver for DIAdem can be used in all phases of the development and production of vehicles, where measurement data accumulates that must be analyzed and compared and presented together with the results in meaningful reports.

**Requirements**

- > DIAdem Version 2010 or higher
- > Vector CAN-Hardware or Vector Keyman with DIAdem licence bit
- > Vector CAN-Driver Version 8.1 or higher
- > Windows 10/8.1/8/7 (32-bit and 64-bit)

**Included with Delivery**

- > Driver-DLL for DIAdem
- > Data base editor (CANdb++) for creating and editing of CAN databases.

DIAdem is a measurement system by National Instruments.